

KURAT ENTERPRISE

KURAT ENTERPRISE

67/69, Jubilee Bldg., Ground Flr., Opposite Kalyan Bldg.,
P.B. Marg, Near Navjeevan Society, Grant Raod,
Mumbai – 400 008. India.

Tel: +9122 23002114 Fax: + 9122 23002114

Mobile: +91 9820754929

Email: infokurat@gmail.com / instrumentfittings@gmail.com

Website: <http://www.kuratentp.com> / <http://www.instrumentationfittings.com>

67/69, Jubilee Bldg., Ground Flr., Opposite Kalyan Bldg., P.B. Marg, Near Navjeevan
Society, Grant Raod, Mumbai – 400 008. India. Tel: +9122 23002114 Fax: + 9122 23002114
Mobile: +91 9820754929

Email: infokurat@gmail.com / instrumentfittings@gmail.com

Website: <http://www.kuratentp.com> <http://www.instrumentationfittings.com>

KURAT ENTERPRISE

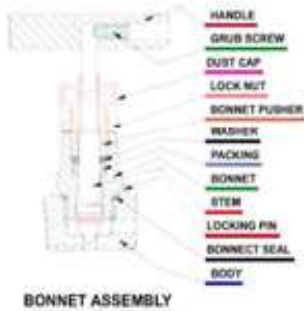


MANIFOLD VALVES

Manifold valves development and manufacture, PIONEER ENTERPRISE are able to introduce most comprehensive range of manifold valves. In this design, selection can be made from a comprehensive range of bodies with variety of connections and valve positions, optimising installations.

Types:

- A) Two valve manifold combination of instrument isolation together with Bleed / Vent & test facilities, in this 1) separate or remote mounting 2) T-type 3) H-type or direct mounting 4) coplanar type & others.
- B) Three valve manifold combination of two instrument isolation together with one Equaliser in this 1) separate or remote mounting 2) T-type 3) H-type or direct mounting 4) coplanar type & others.
- C) Five valve manifold combination of two instrument isolation, two Bleed / Vent together with one Equaliser, in this 1) separate or remote mounting 2) T-type 3) H-type or direct mounting 4) coplanar type & others.



TECHNICAL SPECIFICATIONS

- Size : 1/4", 1/2"
- End connection : NPT, BSPT, Socket weld.
- Working Pressure : 6000 Psi (413 Bar)
- Temperature Rating : PTFE 450 Deg. F (232 Deg. C) Grafal 700 Deg. F (371 Deg. C)
- Material of construction : SS 316, SS 304, Monel, C.S.
- Optional Sour Gas service valves are available conforming to NACE Std. MR - 01 - 75
- Stem packing : PTFE, Grafal.
- Orifice : Dia. 4.8
- All valves are 100% Factory tested prior to shipment.

BONNET ASSEMBLY

- Screwed bonnet design.
- Bonnet-back seated blow out proof.
- Spindle - Ground and thread rolled.
- Spindle top-Non rotating top shut off type
- Stemmed, Regulating-rotated and soft sealed.
- Bonnet pusher - silver plated for anti galling freedom for increased stem cycle life.
- Dust cap protects stem threads from external contamination.
- Leak tight seal with low operating torque.

DRAWING NO : PS-VM-00-C L	REV : 00
----------------------------------	-----------------

TITLE : **VALVE MANIFOLD - GENERAL INFORMATION AND TECHNICAL SPECIFICATIONS**

MATERIAL	AS GIVEN
SCALE	
NTS	THIRD ANGLE PROJ

67/69, Jubilee Bldg., Ground Flr., Opposite Kalyan Bldg., P.B. Marg, Near Navjeevan Society, Grant Road, Mumbai – 400 008. India. Tel: +9122 23002114 Fax: + 9122 23002114

Mobile: +91 9820754929

Email: infokurat@gmail.com / instrumentfittings@gmail.com

Website: <http://www.kuratentp.com> <http://www.instrumentationfittings.com>

KURAT ENTERPRISE

BONNET ASSEMBLY

NO	DESCRIPTION	QTY	MATERIAL
1	BODY	1	SS 316
2	BONNET	1	SS 316
3	STEM	1	SS 316
4	BONNET PUSHER	1	SS 316
5	LOCK NUT	1	SS 316
6	PACKING	1	TEFLON
7	WASHER	1	SS 316
8	HANDLE	1	SS 304
9	GRUB SCREW	1	SS
10	DUST CAP	1	PLASTIC
11	LOCKING PIN	1	SS 304
12	BONNET SEAL	1	TEFLON

FEATURES :

- **2 VALVE MANFOLD (STRAIGHT TYPE)**
- 2 valve manifolds are designed for remote or separate mounting. Connecting from process side 1/2" NPT(F) and Instrument side 1/2" NPT(F) Connecting system impulse lines and transmitters, having simple two valves configuration which allows for easy block or isolate, Bleed or Vent valve calibration of a static pressure transmitter or gauges.
- Bleed/vent connection with s.a. plug will be provided on request.
- Approximate weight : 0.95 Kg (2.1 Lbs.).
- Heat code traceability.

BONNET ASSEMBLY

- Screwed bonnet design.
- Bonnet back sealed blow out proof.
- Spindle - Ground and thread rolled.
- Spindle tip-Non rotating tip shut off type
- Sterilized, Regulating-sterilized and soft seated.
- Bonnet pusher - silver plated for anti galling freazing for increased stem cycle life.
- Dust cap protects stem threads from external contamination.
- Leak tight seal with low operating torque.

TECHNICAL SPECIFICATIONS

- Size : 1/4", 1/2"
- End connection : NPT, BSPT, Socket weld.
- Working Pressure : 6000 Psi (413 Bar)
- Temperature Rating : PTFE 483 Deg. F (232 Deg. C) Grafal 798 Deg. F (371 Deg. C)
- Material of construction : SS 316, SS 304, Monel, C.S.
- Optional Sour Gas service valves are available conforming to NACE Std. MR - 01 - 75
- Stem packing : PTFE, Grafal.
- Orifice : Dia. 4.0
- All valves are 100% Factory tested prior to shipment.

APPLICATION

- Refineries, liquid petroleum gas processing plant, petro-chemical plants, systems difficult to shut off due to solid contents dust, rust, dirt etc.

MANIFOLD SELECTION INFORMATION DATA

- Pressure & temperature ratings are selected from ANSI B 14.34 for standard class 2500

TESTING

- Pneumatic Seat test is performed at 1/4 of working pressure.
- Hydrostatic shell test is performed at 1.5 times the working pressure.
- Optional test are available upon request.

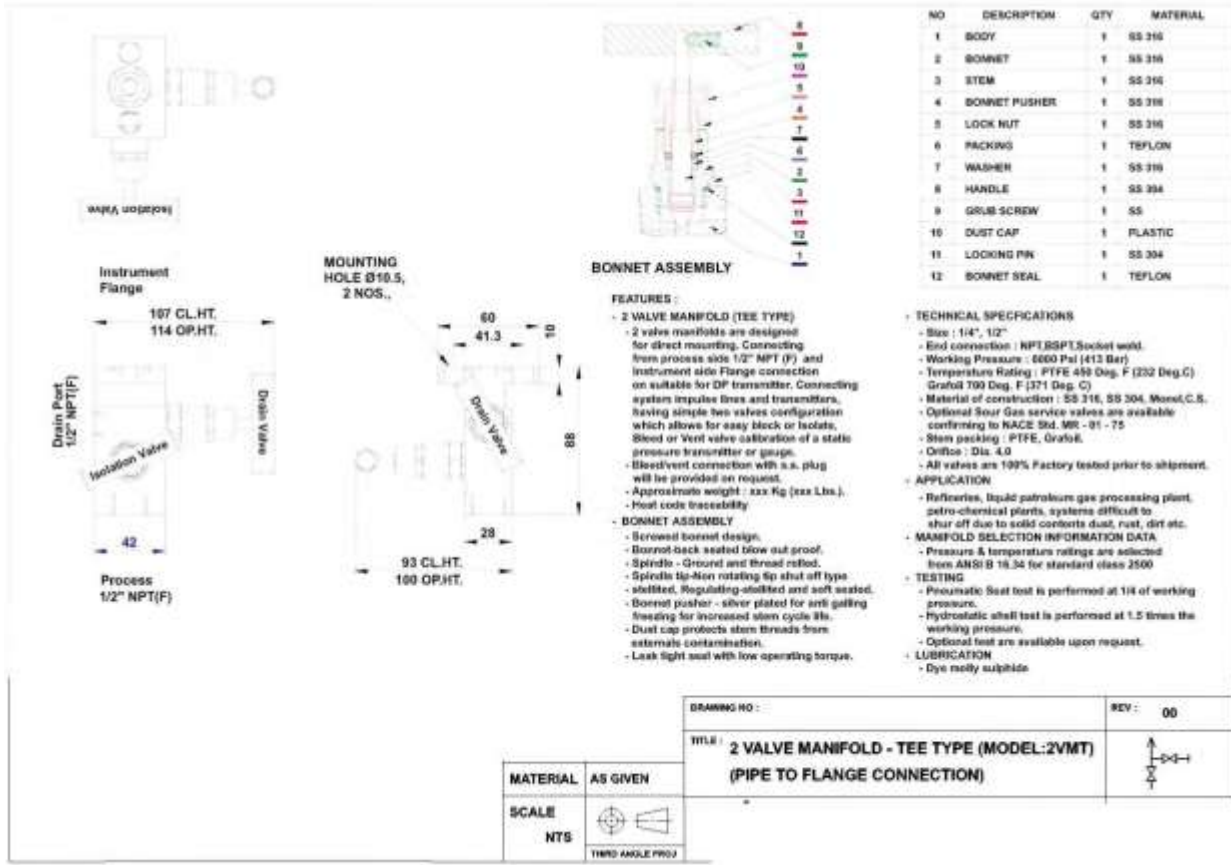
LUBRICATION

- Dye molly sulphide

	DRAWING NO :	REV: 00
	TITLE : 2 VALVE MANIFOLD - STRAIGHT TYPE (MODEL : 2VMS) (PIPE TO PIPE CONNECTION)	
	MATERIAL AS GIVEN	

SCALE		
NTS	THIRD ANGLE PROJ	

KURAT ENTERPRISE



67/69, Jubilee Bldg., Ground Flr., Opposite Kalyan Bldg., P.B. Marg, Near Navjeevan Society, Grant Raod, Mumbai – 400 008. India. Tel: +9122 23002114 Fax: + 9122 23002114
 Mobile: +91 9820754929
 Email: infokurat@gmail.com / instrumentfittings@gmail.com
 Website: <http://www.kuratentp.com> <http://www.instrumentationfittings.com>

KURAT ENTERPRISE

Instrument Flange

Process Flange

Ø12.5 HOLES, 2 NOS.

7/16" UNF x 20TPH, 2 NOS.

BONNET ASSEMBLY

FEATURES :

- 2 VALVE MANIFOLD (H TYPE)
- 2 valve manifolds are designed for direct mounting. Connecting from process side Flange connection and Instrument side Flange connection on suitable for DP transmitter. Connecting system impulse lines and transmitters, having simple two valves configuration which allows for easy block or isolate. Bleed or Vent valve calibration of a static pressure transmitter or gauge.
- Bleed/Vent connection with s.s. plug will be provided on request.
- Approximate weight : xxx Kg (xxx Lbs.).
- Heat code traceability
- **BONNET ASSEMBLY**
- Screwed bonnet design.
- Bonnet-back sealed blow out proof.
- Spindle - Ground and thread rolled.
- Spindle tip-Non rotating tip shut off type stainless. Regulating-stainless and soft seated.
- Bonnet pusher - silver plated for anti galling freasing for increased stem cycle life.
- Dust cap protects stem threads from external contamination.
- Leak tight seal with low operating torque.

TECHNICAL SPECIFICATIONS

- Size : 1/4", 1/2"
- End connection : NPT, BSPT, Socket weld.
- Working Pressure : 6000 Psi (413 Bar)
- Temperature Rating : PTFE 450 Deg. F (232 Deg. C) Grafal 700 Deg. F (371 Deg. C)
- Material of construction : SS 316, SS 304, Monel, C.S.
- Optional Sour Gas service valves are available conforming to NACE MR - 01 - 75
- Stem packing : PTFE, Grafal.
- Orifice : Dia. 4.0
- All valves are 100% Factory tested prior to shipment.

APPLICATION

- Refineries, liquid petroleum gas processing plant, petro-chemical plants, systems difficult to shut off due to solid contents, dust, rust, dirt etc.

MANIFOLD SELECTION INFORMATION DATA

- Pressure & temperature ratings are selected from ANSI B 16.34 for standard class 2500

TESTING

- Pneumatic Seat test is performed at 1/4 of working pressure.
- Hydrostatic shell test is performed at 1.5 times the working pressure.
- Optional test are available upon request.

LUBRICATION

- Dye mostly sulphide

	DRAWING NO :	REV : 00
	TITLE :	
MATERIAL	AS GIVEN	
SCALE	NTS	
	THIRD ANGLE PROJ	

KURAT ENTERPRISE

BONNET ASSEMBLY

FEATURES :

- **3 VALVE MANIFOLD (STRAIGHT TYPE)**
- 3 valve manifolds are designed for remote or separate reworking. Connecting from process side 1/2" NPT(F) and instrument side 1/2" NF(F) connecting systems require lines and transmitters, having simple three valves configuration which allows for easy two block or isolate, one Equaliser valve calibration of a static pressure transmitter or gauge.
- Bleed/vent connection with u.s. plug will be provided on request.
- Approximate weight : xxx Kg (xxx Lbs).
- Heat code traceability
- **BONNET ASSEMBLY**
- Screwed bonnet design.
- Bonnet-back seated blow out proof.
- Spindle - Ground and thread rolled.
- Spindle tip-Non rotating tip shut off type
- stabbed, Regulating-stabbed and soft seated.
- Bonnet pusher - silver plated for anti galling freezing for increased stem cycle life.
- Dust cap protects stem threads from external contamination.
- Leak tight seal with low operating torque.

TECHNICAL SPECIFICATIONS

- Size : 1/4", 1/2"
- End connection : NPT,BSPT,Socket weld.
- Working Pressure : 6000 Psi (413 Bar)
- Temperature Rating : PTFE 450 Deg. F (232 Deg.C) Grafal 750 Deg. F (371 Deg. C)
- Material of construction : SS 316, SS 304, Monel,C.S.I.
- Optional Sour Gas service valves are available conforming to NACE Std. MR - 01 - 75
- Stem packing : PTFE, Grafal.
- Orifice : Dia. 4.0
- All valves are 100% Factory tested prior to shipment.

APPLICATION

- Refineries, liquid petroleum gas processing plant, petro-chemical plants, systems difficult to shut off due to solid contents dust, rust, dirt etc.

MANIFOLD SELECTION INFORMATION DATA

- Pressure & temperature ratings are selected from ANSI B 16.34 for standard class 2500

TESTING

- Pneumatic Seat test is performed at 1/4 of working pressure.
- Hydrostatic shell test is performed at 1.5 times the working pressure.
- Optional test are available upon request.

LUBRICATION

- Dye molly sulphide

DRAWING NO :		REV : 00
TITLE :	3 VALVE MANIFOLD - STRAIGHT TYPE (MODEL : 2VMS) (PIPE TO PIPE CONNECTION)	
MATERIAL : AS GIVEN		

KURAT ENTERPRISE

Ø12.5 HOLES,
2 NOS.

BONNET ASSEMBLY

NO	DESCRIPTION	QTY	MATERIAL
1	BODY	1	SS 316
2	BONNET	1	SS 316
3	STEM	1	SS 316
4	BONNET PUSHER	1	SS 316
5	LOCK NUT	1	SS 316
6	PACKING	1	TEFLON
7	WASHER	1	SS 316
8	HANDLE	1	SS 304
9	GRUB SCREW	1	SS
10	DUST CAP	1	PLASTIC
11	LOCKING PIN	1	SS 304
12			
13	BONNET SEAL	1	TEFLON

Process
1/2" NPT(F)

79 CLOSE HEIGHT
86 OPEN HEIGHT

FEATURES :

- **3 VALVE MANIFOLD (TEE TYPE)**
- 3 valve manifolds are designed for direct mounting. Connecting from process side 1/2" NPT(F) and instrument side Flange connection on suitable for DP Transmitter. Connecting system impulse lines and transmitters, having simple three valves configuration which allows for easy two block or isolate one Equalizer valve calibration of a static pressure transmitter or gauge.
- Bleed/vent connection with u.s. plug will be provided on request.
- Approximate weight : xxx Kg (xxx Lbs.).
- Heat code traceability
- **BONNET ASSEMBLY**
- Screwed bonnet design.
- Bonnet back seated blow out proof.
- Spindle - Ground and thread rolled.
- Spindle tip-non rotating tip shut off type
- Sealed, Regulating-stiffened and soft seated.
- Bonnet pusher - silver plated for anti galling freazing for increased stem cycle life.
- Dust cap protects stem threads from external contamination.
- Leak tight seat with low operating torque.

TECHNICAL SPECIFICATIONS

- Size : 1/4", 1/2"
- End connection : NPT, BSPT, Socket weld.
- Working Pressure : 6000 Psi (413 Bar)
- Temperature Rating : PTFE 450 Deg. F (232 Deg. C) Graphite 700 Deg. F (371 Deg. C)
- Material of construction : SS 316, SS 304, Monel, C.S.
- Optional Seal Gas service valves are available conforming to NACE Std. MR - 01 - 75
- Stem packing : PTFE. Graphite.
- Orifice : Dia. 4.8
- All valves are 100% Factory tested prior to shipment.
- **APPLICATION**
- Refineries, liquid petroleum gas processing plant, petro-chemical plants, systems difficult to shut off due to solid contents dust, rust, dirt etc.
- **MANIFOLD SELECTION INFORMATION DATA**
- Pressure & temperature ratings are selected from ANSI B 16.34 for standard class 2500
- **TESTING**
- Pneumatic Seat test is performed at 1/4 of working pressure.
- Hydrostatic shell test is performed at 1.5 times the working pressure.
- Optional test are available upon request.
- **LUBRICATION**
- Dyn molly sulphide

	DRAWING NO :	REV : 00
	TITLE : 3 VALVE MANIFOLD - TEE TYPE (MODEL:3VMT) (PIPE TO FLANGE CONNECTION)	
MATERIAL	AS GIVEN	

SCALE
NTS

THIRD ANGLE PROJ

KURAT ENTERPRISE

BONNET ASSEMBLY

FEATURES :

- 3 VALVE MANIFOLD (H-TYPE)
- 3 valve manifolds are designed for direct mounting. Connecting from process Flange connection on suitable for process. Instrument side Flange connection on suitable for DP Transmitter. Connecting system impulse line and transmitters, having simple three valves configuration which allows for easy two block or isolate, one Equaliser valve calibration of a static pressure transmitter or gauge.
- Bleed/vent connection with s.s. plug will be provided on request.
- Approximate weight : xxx Kg (xxx Lbs.).
- Heat code traceability

BONNET ASSEMBLY

- Screwed bonnet design.
- Bonnet-back sealed blow out proof.
- Spindle - Ground and thread rolled.
- Spindle tip-Non rotating tip shut off type -stiffled, Regulating-stiffled and soft seated.
- Bonnet pusher - silver plated for anti galling freezing for increased stem cycle life.
- Dust cap protects stem threads from external contamination.
- Leak tight seal with low operating torque.

TECHNICAL SPECIFICATIONS

- Size : 1/4", 1/2"
- End connection : NPT, BSPT, Socket weld.
- Working Pressure : 6000 Psi (413 Bar)
- Temperature Rating : PTFE 450 Deg. F (232 Deg. C) Grafoil 709 Deg. F (371 Deg. C)
- Material of construction : SS 316, SS 304, Monel, C.S.
- Optional Sour Gas service valves are available conforming to NACE Std. MR - 01 - 75
- Stem packing : PTFE, Grafoil.
- Orifice : Dia. 4.0
- All valves are 100% Factory tested prior to shipment.

APPLICATION

- Refineries, liquid petroleum gas processing plant, petro-chemical plants, systems difficult to shut off due to solid contents dust, rust, dirt etc.

MANIFOLD SELECTION INFORMATION DATA

- Pressure & temperature ratings are selected from ANSI B 16.34 for standard class 2500

TESTING

- Pneumatic Seat test is performed at 1/4 of working pressure.
- Hydrostatic shell test is performed at 1.5 times the working pressure.
- Optional test are available upon request.

LUBRICATION

- Dye molly sulphide

DRAWING NO :		REV : 00
TITLE : 3 VALVE MANIFOLD - H TYPE (MODEL : 3VMH) (FLANGE TO FLANGE CONNECTION)		
MATERIAL	AS GIVEN	
SCALE NTS		THIRD ANGLE PROJ

KURAT ENTERPRISE

Instrument
1/2" NPT(F)
Ø6.5, 2 NOS,
FOR MOUNTING

DRAIN
1/4" NPT, 2 NOS.

230 CL.HT.
244 OP.HT.
Process
1/2" NPT(F)

BONNET ASSEMBLY

NO	DESCRIPTION	QTY	MATERIAL
1	BODY	1	SS 316
2	BONNET	1	SS 316
3	STEM	1	SS 316
4	BONNET PUSHER	1	SS 316
5	LOCK NUT	1	SS 316
6	PACKING	1	TEFLON
7	WASHER	1	SS 316
8	HANDLE	1	SS 304
9	GRUB SCREW	1	SS
10	DUST CAP	1	PLASTIC
11	LOCKING PIN	1	SS 304
12	BONNET SEAL	1	TEFLON

FEATURES:

- 5 VALVE MANIFOLD (STRAIGHT TYPE)**
 - 5 valve manifolds are designed for remote or separate mounting. Connecting from process side 1/2" NPT(F) and instrument side 1/2" NPT(F) Connecting system impulse lines and transmitters, having simple flow valves configuration which allows for easy two block or isolate, two, one bleed or Vent valve calibration of a static pressure transmitter or gauge.
 - Bleed/Vent connection with s.s. plug will be provided on request.
 - Approximate weight : 200 Kg (440 Lbs).
 - Heat code traceability
- BONNET ASSEMBLY**
 - Screwed bonnet design.
 - Bonnet-back sealed blow out proof.
 - Spindle - Ground and thread rolled.
 - Spindle tip-Non rotating tip shut off type
 - stiffened, Regrinding-stiffened and soft sealed.
 - Bonnet pusher - silver plated for anti galling
 - Respring for increased stem cycle life.
 - Dust cap protects stem threads from external contamination.
 - Leak tight seat with low operating torque.

TECHNICAL SPECIFICATIONS

- Size : 1/4", 1/2"
- End connection : NPT, BSPT, Socket weld.
- Working Pressure : 6000 Psi (413 Bar)
- Temperature Rating : PTFE 450 Deg. F (232 Deg. C) Graph 700 Deg. F (371 Deg. C)
- Material of construction : SS 316, SS 304, Monel, C.S.
- Optional Sour Gas service valves are available conforming to NACE Std. NR - 01 - 75
- Stem packing : PTFE, Graphite.
- Orifice : Dia. 4.0
- All valves are 100% Factory tested prior to shipment.

APPLICATION

- Refineries, liquid petroleum gas processing plant, petro-chemical plants, systems difficult to shut off due to solids contents dust, rust, dirt etc.

MANIFOLD SELECTION INFORMATION DATA

- Pressure & temperature ratings are selected from ANSI B 16.34 for standard class 2500

TESTING

- Pneumatic Seal test is performed at 1/4 of working pressure.
- Hydrostatic shell test is performed at 1.5 times the working pressure.
- Optional test are available upon request.

LUBRICATION

- Dye mostly supplied

MATERIAL	AS GIVEN
SCALE	NTS

DRAWING NO:	REV: 00
TITLE : 5 VALVE MANIFOLD - STRAIGHT TYPE (MODEL : 5VMS) (PIPE TO PIPE CONNECTION)	

--

KURAT ENTERPRISE

FRONT VIEW DIMENSIONS:
 Instrument Flange: 54
 Drain: 1/2" NPT, 2 NOS., 54
 Process: 1/2" NPT(F), 100
 230 CL.HT., 144 OP.HT.

SIDE VIEW DIMENSIONS:
 80 CL.HT., 87 OP.HT., 10, 30, 95 CL.HT., 102 OP.HT.

MONITORING HOLES: 4 NOS., 12.5 HOLES, FOR MOUNTING

BONNET ASSEMBLY: 12 numbered callouts (1-12) pointing to various components.

FEATURES:

- 5 VALVE MANIFOLD (TEE-TYPE)
 - 5 valve manifolds are designed for direct mounting. Connecting from process side 1/2" NPT(F) and instrument side flange connection on suitable for DP Transmitter. Connecting system impulse lines and transmitters, having simple five valves configuration which allows for easy block or isolate, two Equaliser, one Bleed or Vent valve calibration of a static pressure transmitter or gauge.
 - Bleed/vent connection with a.s. plug will be provided on request.
 - Approximate weight : 1.88 Kg (2.2 Lbs.).
 - Heat code traceability
- BONNET ASSEMBLY
 - Screwed bonnet design.
 - Bonnet back seated blow out proof.
 - Spindle - Ground and thread rolled.
 - Spindle tip-Non rotating tip shut off type
 - s-lebited, Regulating-slebited and soft seated.
 - Bonnet pusher - s-alver plated for anti galling
 - Fronding for increased stem cycle life.
 - Dust cap protects stem threads from external contamination.
 - Leak tight seal with low operating torque.

TECHNICAL SPECIFICATIONS:

- Size : 1/4", 1/2"
- End connection : NPT, BSPT, Socket weld.
- Working Pressure : 5000 Psi (412 Bar)
- Temperature Rating : PTFE 450 Deg. F (232 Deg. C) Grafal 700 Deg. F (371 Deg. C)
- Material of construction : SS 316, SS 304, Monel, C.S.
- Optional Sour Gas service valves are available conforming to NACE Std. MR - 01 - 75
- Stem packing : PTFE, Grafal.
- Orifice : Dia. 4.8
- All valves are 100% Factory tested prior to shipment.

APPLICATION:

- Refineries, liquid petroleum gas processing plant, petro-chemical plants, systems difficult to shut off due to solid contents dust, rust, dirt etc.

MANIFOLD SELECTION INFORMATION DATA:

- Pressure & Temperature ratings are selected from ANSI B 16.34 for standard class 2500

TESTING:

- Pneumatic Seat test is performed at 1/4 of working pressure.
- Hydrostatic shell test is performed at 1.5 times the working pressure.
- Optional test are available upon request.

LUBRICATION:

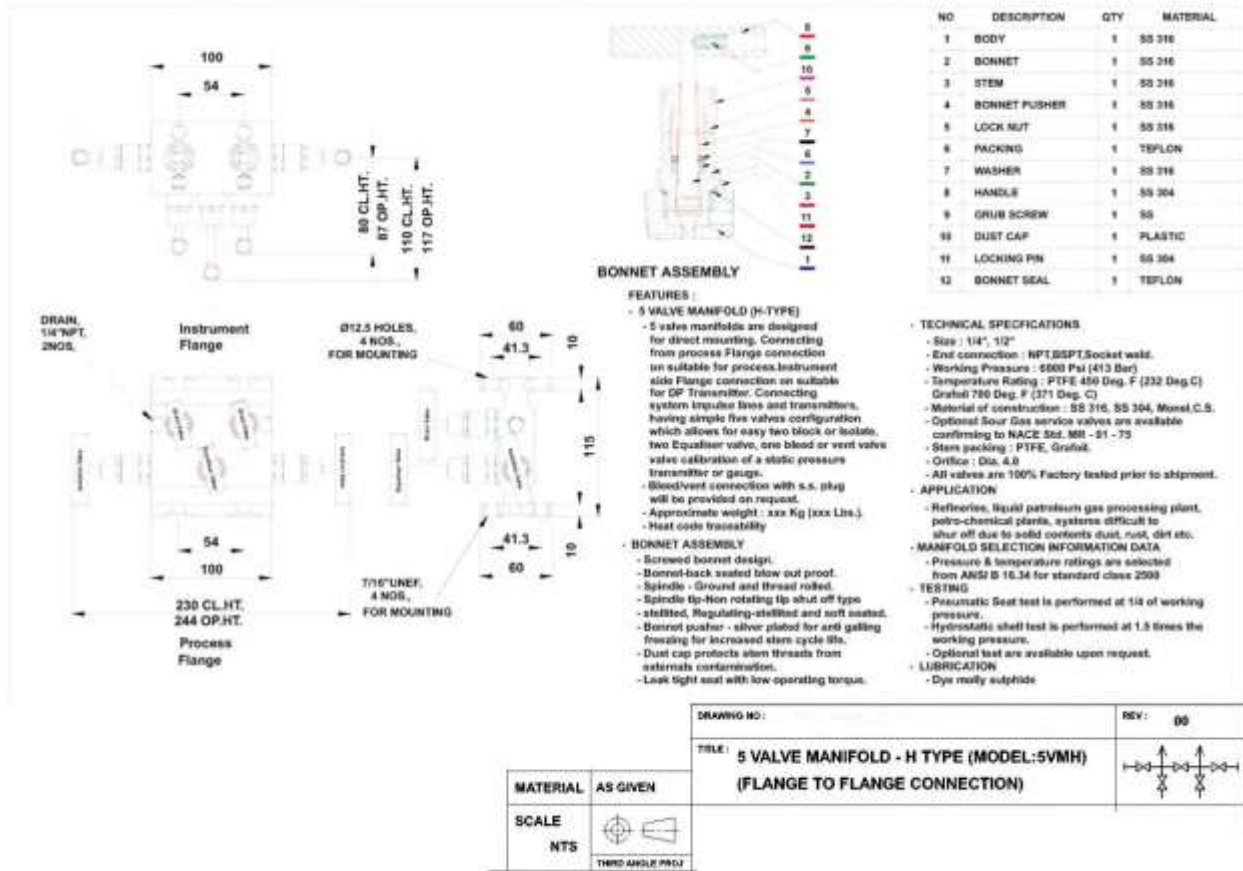
- Dye molly sulphide

MATERIAL		AS GIVEN
SCALE		NTS
		THIRD ANGLE PROJ.

DRAWING NO :	REV : 00
TITLE : 5 VALVE MANIFOLD - TEE TYPE (MODEL:5VMT) (PIPE TO FLANGE CONNECTION)	

67/69, Jubilee Bldg., Ground Flr., Opposite Kalyan Bldg., P.B. Marg, Near Navjeevan Society, Grant Raod, Mumbai – 400 008. India. Tel: +9122 23002114 Fax: + 9122 23002114
 Mobile: +91 9820754929
 Email: infokurat@gmail.com / instrumentfittings@gmail.com
 Website: <http://www.kuratentp.com> <http://www.instrumentationfittings.com>

KURAT ENTERPRISE



67/69, Jubilee Bldg., Ground Flr., Opposite Kalyan Bldg., P.B. Marg, Near Navjeevan Society, Grant Road, Mumbai – 400 008. India. Tel: +9122 23002114 Fax: + 9122 23002114
 Mobile: +91 9820754929
 Email: infokurat@gmail.com / instrumentfittings@gmail.com
 Website: <http://www.kuratentp.com> <http://www.instrumentationfittings.com>